



The magic life in the image world

E-IMAGE

EL-P150

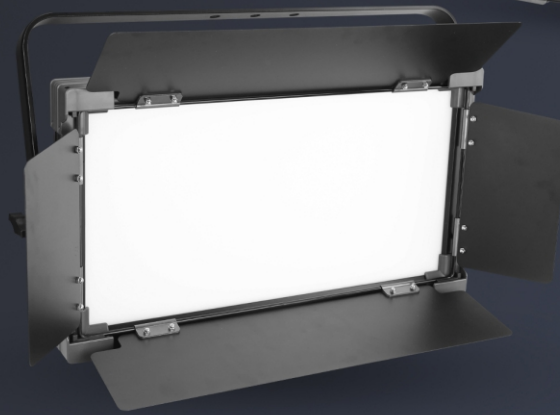
LED PANEL LIGHT

150W Max Power

DMX 512

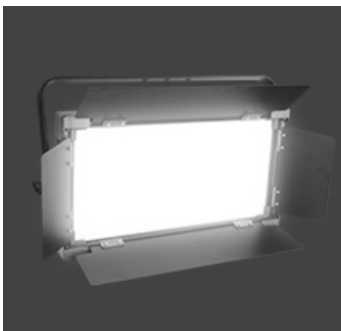
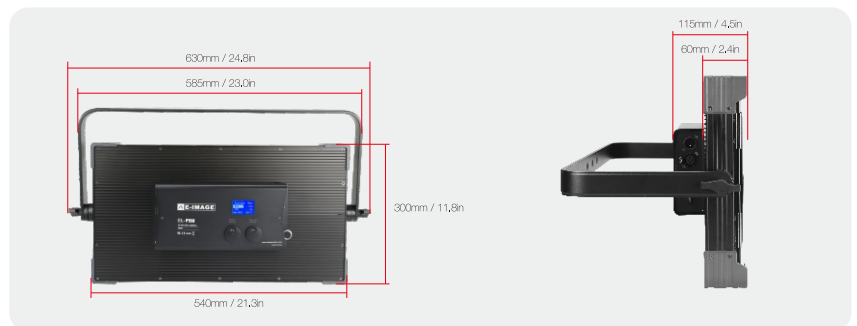
OLED Display

5600K Color Temperature



| EL-P150 |

E-IMAGE New EL-1152 LED panel light equipped with 1152PCS lamp beads, CRI>95 completely with 5600K perfect color ensure that its light is natural life like. Light intensity is variable from 0 to 100% to match the ambient level or serve as an adjustable key light. You can change brightness and color temperature quickly by using adjusting knob.



Color Temperature

Temperature 5600K.



SMD LED

EL-P150 is professionally designed for television studio, using 1152PCS 0.35W high-quality, high color rendering index, high stability SMD LED lamp.



DMX512 Ready

For studio applications, it supports DMX 512 via a 3-pin XLR connector, and it's equipped to fit into any lighting grid or studio setting.



Quick Adjust Knob

With two quick adjust knobs to setup menu and adjust the light brightness and color temperature for convenient operation.

| EL-P150 |



Mode setting: Enter the basic function mode interface such as DMX address, channel mode, dimmer mode, and so on.

Manual setting: Directly enter the brightness and color temperature adjustment interface.

Specifications

Power Supply	AC100V-240V, 50Hz/60Hz
Power Consumption	150W
LED QTY	1152pcs
LED Life	>50000H
Color Temperature	5600K
CRI	≥95Ra
Dimmer	0-100% linear dimmer
Cooling System	High quality radiator
Display	OLED display
Control Mode	International standard DMX512 signal
DMX Connection	XLR 3Pin
Channel Mode	1 channels or 2 channels
Protection Grade	IP20
Use Environment Temperature	-20°C-45°C
Barndoor	Included
Net Weight	5.2kg/ 11.5lbs
Size	630x115x300mm/ 24.8x4.5x11.8in

What's included:



- LED Panel Light
- AC Power Cable
- 3-Pin Male to Female XLR DMX Cable
- User Guide