



The magic life in the image world

# E-IMAGE

## MH32-MT Flat Base Fluid Head

The E-IMAGE MH32-MT fluid head is designed with mitchell mount base for the supported load capacity of 32kg(70.56lbs).With totally new inner structure- continuous stepless counterbalance, providing precise adjustment and wide application for different cameras. Multi-grades of pan and tilt drag offers accurate feeling that you want. Special designed safety locking plate make sure the plates is locked tightly, avoid any accident. Illuminated bubble level can be checked in dim light conditions.



	32.0kg / 70.5lbs
	0-32
	1-8
	1-8
	-67° / +90°
	-40° / +80°
	7.4g / 16.3lbs
	Flat Base

## Features



**Flat Base Fluid Head**  
100mm flat base.



**Balance Adjustment**  
Continuous variable counterbalance can support from max. payload down to zero with visualized date display.



**Double Locking System Offer Safety Operation**  
Double locking system for QR plate.Quick press on platform make the camera mounted or released quickly.



**Setting Of The Damping**  
8 steps for both pan/tilt drag adjustment.



**Pan & Tilt Locks**  
Independent pan/ tilt quick locking knob, with ergonomic design.



**Handle**  
Double new ergonomic design and extendable handle bars are included.



The magic life in the image world

# E-IMAGE

## ECT110 Mitchell Base

The E-IMAGE ECT110 heavy duty tripod is a modified version of ECT100M. It's more steady and stable. With a load capacity of 220lbs, quick and secure flip-clamping system with safety locks. The tripod can support professional DSLR's, long telephoto lenses and professional camcorders. The tripod is made of 12X layer carbon fiber, very sturdy, working height range of 61.3cm to 150.5cm.



	150.5cm / 59.3in
	61.3cm / 24.1in
	75.6cm / 29.8in
	100.0kg / 220.0lbs
	9.4kg / 20.7lbs
	Mitchell Base
	Carbon Fiber
	3

## Features



### Mitchell Base

Compatible with all professional flat base video heads.



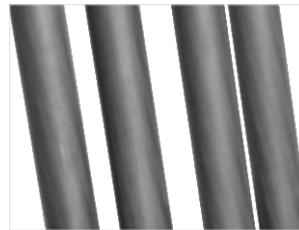
### Metal Main Body

All metal main body, super sturdy.



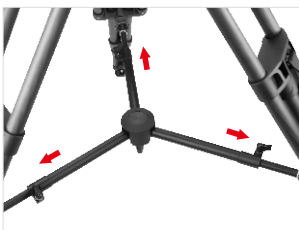
### Quick Clamping System

Very convenient to locking the tripod in place.



### High Quality Material(Carbon fiber)

Strong support for video recording.



### Adjustable Middle Spreader

Enhance tripod stability.



### Rubber Foot & Spike foot

Always providing Max. stability whatever shooting surface is.



The magic life in the image world

# E-IMAGE

## MOTUS32 MT Video Tripod System

E-IMAGE heavy duty carbon fiber tripod Leg ECT110 with new designed fluid head MH32-MT supports cameras and accessories weighing up to 32kg(70.5lbs), with EI-7000L middle spreader and rubber feet. The tripod extends to a height of 173.5cm and collapses down as low as 84.0cm. It can provides precise adjustment and wide application for different cameras.



### Component :

Fluid head	MH32-MT
Tripod	ECT110
Packing	Head : Safety Box Tripod: SC-4 Carrying Bag



<b>Model</b>	MOTUS32 MT (MH32-MT Fluid Head + ECT110 Carbon Fiber Tripod)
	32.0kg / 70.5lbs
	173.2cm / 68.2in
	84.0 / 33.1in
	98.3cm / 38.7in
	16.8kg / 37.0lbs
	Mitchell Base
<b>Packing</b>	Head (Safety Box) / Tripod (SC-4 Carrying Bag)