

# RS-875

Roller Stand



## Specifications

	111cm / 43.7in
	340cm / 133.9in
	100cm / 39.4in
	20,25,30,35mm / 0.8,1.0,1.2,1.4in
<b>LEG</b>	20x40mm / 0.8x1.6in
	6kg / 13.2lb
	8kg / 17.6lb
	89cm / 35in
	5/8"

## Features



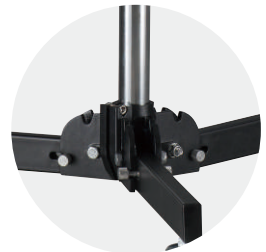
Fold-Up Base.



Locking Wheels.



Ergonomic knob use comfortably and lock quickly.



Stable and sturdy base.



Minimum Height



Maximum Height



Transport Length



Center Tube Size

**LEG** Leg Tube Size



Net Weight



Payload Range



Footprint Diameter



Spigot Size