

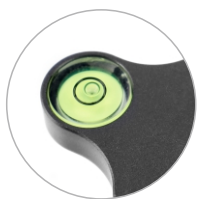


EI-A29 Leveling Base Head

The E-IMAGE EI-A29 Leveling Base Head provides fast leveling for tripods without built-in levels. Bubble level helps ensure that your base is level to the horizon. Designed with 1/4" male top screw and 3/8" female bottom socket, compatible with various tripods and cameras.

Features

- Swivel up to 15° at any direction smoothly, with bubble level.
- Design for precise leveling of tripod heads, video ball and panoramic heads.
- CNC constructed aluminum alloy body, flat and compact design for high stability.
- Bottom diameter 6cm, with a 3/8" screw.
- Top 1/4" screw can attach to most photographic head.



Leveling bubble



Non-skid rubber increase the friction to prevent cameras from falling down.



3/8" Screw hole



The knob can be pulled out to adjust the angle to prevent collision



Three anti-twist screws prohibit unwanted rotation of tripod head, camera or other attached device.



Universal Leveling Base & Quick adjustment.



*** Notes:** Every time you move the tripod or transfer the leveling base, make sure the camera has been removed or is held securely.

Specifications :

Payload range	10kg / 22.0lb
Net weight	280g / 0.6lb
Adjust angle	±15°
Base screw	1/4" / 3/8"
Bottom hole	3/8"



What's included :



EI-A29	x1
2.5MM Hex Wrench	x1
2.0MM Hex Wrench	x1
1/4" to 3/8" screw adapter	x1